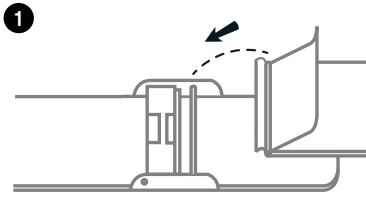
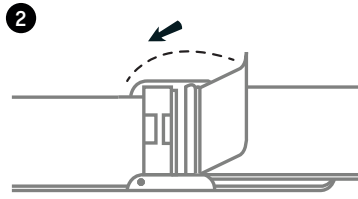


Instructions

CLOSING THE CLASP OF YOUR STRAP

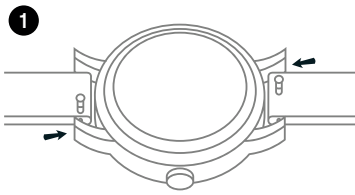


1. Hook the top part of the clasp onto the thin metal bar.

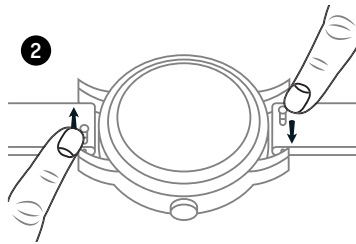


2. Snap the closure on.

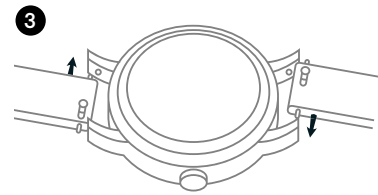
CHANGING YOUR STRAP



1. Securely hold the watch and locate the pin mechanism on the bottom side of the strap.

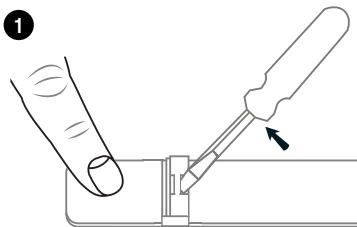


2. Slide the pin to the opposite side to release the strap from the lugs.

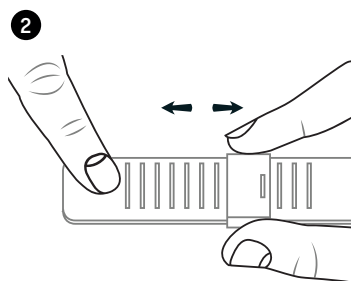


3. To attach a new strap, start with the pin located on the opposite side of the slide mechanism. Place the pin in the lug, while slightly tilting the strap forward. Slide the pin mechanism and place the other pin between the lugs.

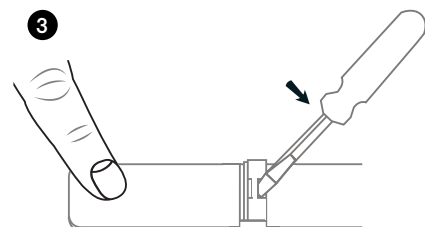
ADJUSTING THE SIZE OF YOUR STRAP



1. Insert a metal tool into the slot and lift up the plate clamp.



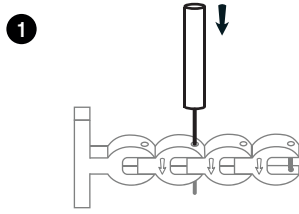
2. On the back side, slide the locking clasp to the desired position to adjust the length of the strap.



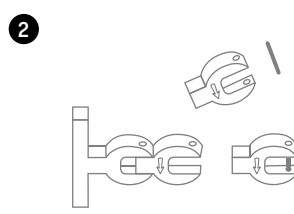
3. Press the plate clamp back down (firmly) to lock the clasp to the mesh strap.

Instructions

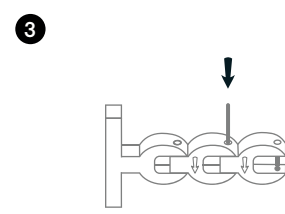
ADJUSTING THE SIZE OF YOUR LINK STRAP



1. Insert the strap tool (supplied with every steel strap) into the hole on the side of the strap and push the pin out in the direction of the arrow. Using a small household hammer, tap lightly until the pin comes out on the other side. Grasp the pin and pull out.



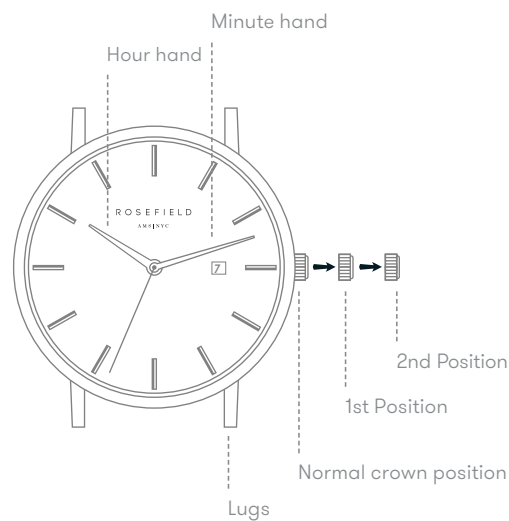
2. Remove or add required strap links. If removing more than one strap link, remove an equal number of links from both sides (if possible) to keep the strap even and symmetrical.



3. After removing or adding the necessary number of strap links, place the pins back in the opposite direction of the arrows shown on the links, the pin's grooved top faced down. To finish, tap the pins back through using the hammer.

SETTING THE TIME AND THE DATE

- 1.** Remove the plastic stopper to start the watch.
- 2.** Pull the crown out to the second position.
- 3.** Turn the crown to set the time.
- 4.** Push the crown back to the normal position.



- 1.** Pull the crown out to the first position.
- 2.** Turn the crown counter-clockwise to set the date.
- 3.** Push the crown back to the normal position.

** If the date is set between the hours of 9:00 PM and 1:00 AM, the date may not change the following day.*